



ALLDAY TIME SYSTEMS



01252 544457

STEP BY STEP GUIDE TO USING THE BACK-PLATE

You can use the back-plate as either a stand for desk top use or you can use the back-plate to secure the unit to a wall.



STEP 1

open the box and remove the contents, which will look like this

STEP 2

using a screwdriver remove the two fixing screws from the back-plate (and keep these for Step 7)



STEP 3

remove the back-plate

Please note: Steps 4 and 5 are for desk top use, if you wish to secure the unit to a wall then go to Step 6



STEP 4

push the back-plate firmly into the slot on the back of the unit to make a stand

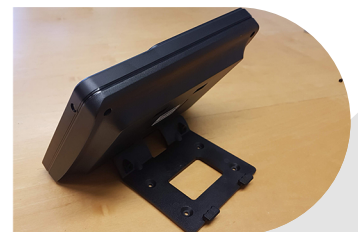


STEP 5

with the stand in place the unit should now look like this

FRONT VIEW

BACK VIEW



STEP 6

To fix the unit to a wall, first use the back-plate holes to mark four points on the wall where the unit is to be placed. You will find four wall plugs and four screws in the box. Once you have fixed the back-plate to the wall then go to step 7



STEP 7

use the two black screws removed in step 1 to fix the unit to the back-plate

For information on how to set up and use the unit please see the separate 'AllDay Timekeeper User Guide'